

**ACCPAC®**

# Pro Series Manufacturing

---



# Ultimate Flexibility

ACCPAC Pro Series™ Manufacturing has the built-in flexibility you need to customize and modify your system. With advanced tools and full source code availability, Pro Series Manufacturing delivers the ultimate in flexibility and growth. Pro Series Manufacturing is developed using industry-leading technology and is the foundation for an integrated set of end-to-end business management applications.

## Ready to Use, Easy to Adapt

ACCPAC Pro Series Manufacturing is a robust production and management solution designed to meet the changing needs of your business. From simple desktop personalization and user-specific customization, to complete source code modification, Pro Series Manufacturing adapts to the way you do business.

Available in two powerful editions – Small Business Edition and Enterprise Edition – Pro Series Manufacturing offers a full range of features and benefits to help you better manage your business. Start with Small Business Edition and when you're ready to add more users or need to modify your system, move to Enterprise Edition. Pro Series Manufacturing Enterprise Edition comes with complete source code and can be modified to maximize your business processes.

## Technology You Can Trust

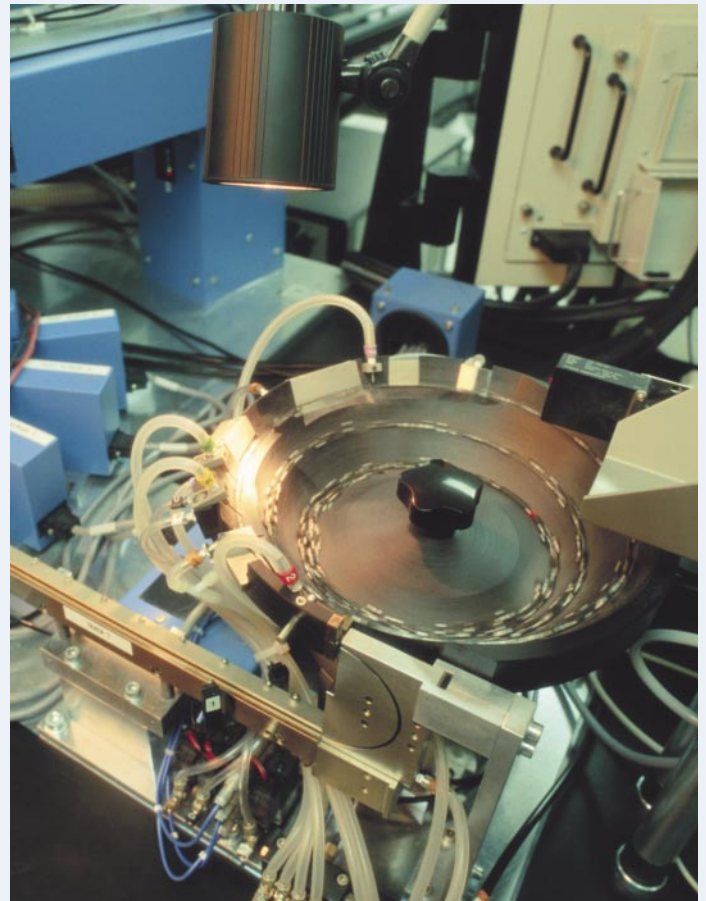
ACCPAC Pro Series Manufacturing runs on industry-leading Microsoft® Visual FoxPro® and Microsoft SQL Server technology. Microsoft Visual FoxPro enables you to create and manage high-performance, 32-bit database applications, and is ideal for building modern, scalable, multi-tiered applications with client/server computing and Internet integration. Microsoft SQL Server is a high performance, relational database solution with advanced management and tuning functionality.

**ACCPAC Pro Series Manufacturing offers source code availability for maximum control over your manufacturing system and its growth path.**

## Solutions for Today and Tomorrow

The ACCPAC® reputation for providing dependable, cost-effective accounting solutions for more than two decades was built on serving customers just like you. If you're looking for integrated business management solutions, performance and advanced functionality, ACCPAC has the right solutions for your business – today and tomorrow.

With more than 500,000 registered clients in over 135 countries, we've helped companies around the world gain strategic advantages designed to take them confidently into the future. Dedication to quality, technology and service is what makes this achievement possible.



**From simple desktop personalization and user-specific customization, to complete source code modification, Pro Series Manufacturing adapts to the way you do business.**

# End-to-End Business Management Applications

With ACCPAC Pro Series Manufacturing as the engine that powers your business, you get integrated business management applications, flexible deployment options, advanced customization features and investment protection. From Web store to warehouse, pre-sales prospecting to post-sales customer care, ACCPAC provides a full suite of business management applications. In addition, ACCPAC enjoys the support of third-party developers around the globe who have created numerous vertical solutions to address industry-specific requirements.

**ACCPAC eCRM**

ACCPAC eCRM™ is a wireless and Internet-based CRM solution that provides business-wide access to vital customer and partner information – anytime, anywhere. eCRM helps you better manage your business by integrating field sales, internal sales, customer care and marketing information.

**ACCPAC Warehouse Management System**

ACCPAC Warehouse Management System™ (WMS) is designed to automate your materials-handling process and help you better manage your supply chain. It works as part of a complete operational solution by interfacing with radio-frequency hardware, barcoding systems, shipping systems and other warehouse automation equipment, providing a better allocation of human resources within the warehouse.

**ACCPAC eTransact**

ACCPAC eTransact™ is a quick and affordable way to create a professional Web store that fully integrates with your back-office ACCPAC accounting system and adapts to the way you do business. This solution makes it easier for new and existing customers to “serve themselves” by shopping and placing orders on the Web.

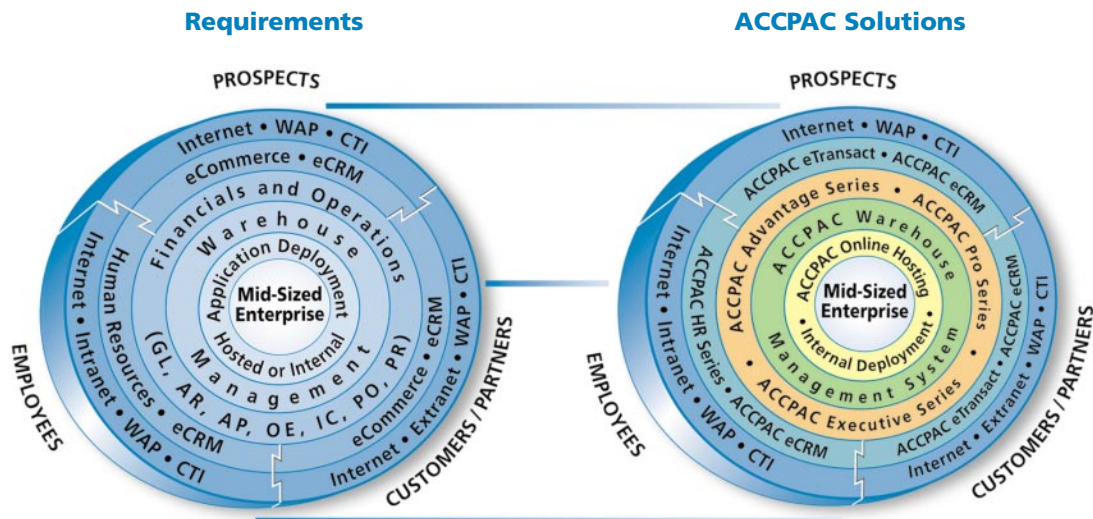
**ACCPAC HR Series**

ACCPAC HR Series™ helps you accurately and efficiently manage your human resources and employee benefits. HR Series keeps your staff on track with easily accessible information – calculated and reported in real time and available over the Internet.

**ACCPAC Options**

ACCPAC offers you a wide range of add-on solutions to help you extend and customize your ACCPAC accounting system. Call 800-416-1103 to order your free ACCPAC Options™ catalog today!

## ACCPAC End-to-End Business Management Applications



ACCPAC empowers mid-market enterprises with a complete suite of end-to-end business management applications.

# A Full Suite of Production Modules

## Production Entry

Production Entry provides bill of materials, sales kit and configuration, and backflush processing and supports up to 99 bill of material levels and real-time costing from Inventory Control. Modular and variable BOM types are available to handle product configuration requirements with speed and flexibility, as well as maintaining fewer BOMs.

## Work Orders

Work Orders enables component allocation, routing, and Material Requirement Planning (MRP) features. Production orders can be automatically generated from sales order requirements, inventory shortages or inventory forecasts. By defining work centers and operation steps, manufacturers can create flexible labor routes. Work Orders generate purchase orders from MRP shortages and bill of material components marked for external processing.

## Shop Control

Shop Control delivers shop floor capacity scheduling, what-if planning capabilities, and WIP tracking for production managers that require Manufacturing Resource Planning (MRPII) features.

Shop Control imports open work orders with defined routes, identifies bottlenecks and calculates work order completion dates. “What-if” plan orders can be created to view material and resource requirements without affecting real-time purchasing decisions.

## Project Accounting

Project Accounting provides an estimate, budget and costing tool for job cost management and allows for up to four levels of cost tracking with project, phase, category and cost-type definitions. The job account mask supports the optional use of phases and/or categories as well as user-defined cost types. Integrates with Accounts Payable, Accounts Receivable, Inventory Control, Payroll, Purchase Orders and Order Entry.

## Customer Connect

Client Tracker tracks customer, vendor, and prospect events for an unlimited number of contact names per company. Client Tracker provides unlimited notes for each contact event and a follow-up field for effective contact management. Each contact record supports eight phone numbers, nine user-defined fields and additional fields for personal information management.

## Bills of Lading

Bills of Lading support the planning and tracking of inventory movement between warehouse locations and prints bills of lading for warehouse transfer or sales order transactions. Additional attributes can be assigned to inventory items for rules-based handling of National Motor Freight Classification (NMFC) codes that universally identify the contents being shipped.

## Inventory Control

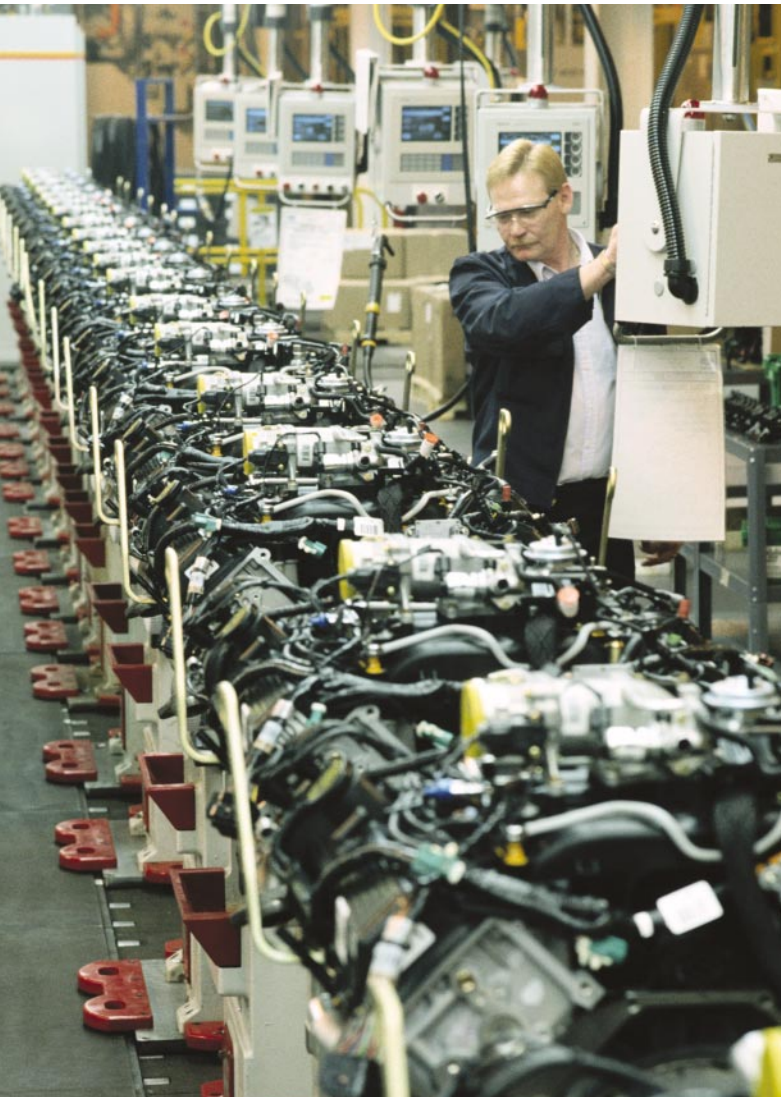
Inventory Control automatically tracks inventory balances, serial numbers and lots, and product line information (Serial Number and Lot Tracking are options for Pro Series Manufacturing Small Business Edition). Inventory Control prints extensive reports allowing you to easily analyze and control your inventory. All balances are updated in real time for up-to-the-minute, on-screen access.

## Order Entry

Order Entry generates, schedules and maintains estimates, sales orders and backlogs. Invoices are created automatically if linked to Accounts Receivable. Order Entry prints pick lists, UPS C.O.D. tags and a wide variety of sales order analysis reports. Repeats on similar orders can be automatically copied from existing or previously shipped orders.

## Purchase Orders

Purchase Orders is a complete purchase order processing system with real-time tracking, extensive reporting capabilities and automatic updating of vendors and inventory account balances. Advanced laser-form technology produces high-quality laser-printed purchase orders for your vendors. Included is the capability to fax or send purchase orders via e-mail.



# Competitive Advantages With Every Click

## Flexible Bills of Material

Bills of material can be defined using a number of options. Each bill of materials has its own settings enabling you to get complete control of your manufacturing or distribution operations.

Bill of Materials Maintenance, Component Detail

BOM Number: WIDGET Revision Level: [ ]  
Description: Widget - Manufactured Item

Line Number: 20 Active: 03/28/99 Inactive: / / Standard [v]  
Item Number: CABL16-BLK Wire, 16ga, Black Vinyl External Modular  
Item Revision: [ ] Standard  
Loct ID: WH1 Warehouse 1 Variable  
Work Center: [ ] Store/Bin: [ ]

Qty Used: 5.000 Usage U/M: [ ] Offset Days: 0 Auto BO [ ]  
Qty Scrap: 0.000 FT Is scrap per unit? [ ]

Drawing Number: [ ] Balloon Item Number: 0

Processing Instructions: [ ]

Support for modular and variable components dramatically decreases the number of bills of material you maintain.

## Real-Time Business Information

With ACCPAC Pro Series Manufacturing Business Status Report™ you can check vital financial measurements in real time. Check your accounts receivable balance, accounts payable balance, month-to-date sales and cost of goods – even see projected totals. It's like a barometer for your business.

## Easy-To-Use MRP and MRPII

Manufacturers needing MRP or MRPII don't sacrifice ease of use in the Pro Series Manufacturing environment. Additional integrated modules are installed in minutes, providing manufacturers with tangible benefits in days – not weeks or months. Component allocation, production orders, routing, plan orders, WIP tracking, and fixed capacity scheduling are delivered with power and speed.

WIP Tracking

Cust No: MFGW0 Name: [ ]  
Work Order: 1003 Work Order Date: 03/23/01  
Finished Good: WIDGET Required Date: 03/23/01  
Description: Widget - Manufactured Item

Total Qty: 100.000 Open Qty: 100.000 Remain to Apply: 0.000

Work Center	Operation	Current Qty	Updated Qty	Total Time	Add Time	Done
AREA1	PREP		73.000		10.000	
AREA2	CUT		20.000		4.500	
AREA3	SAND1		7.000		3.750	
AREA4	FINISH					

Take control of how production is progressing on work orders by using the WIP Tracking screen.

## Automated Work Flow

ACCPAC ProAlert™ is specifically designed to notify you of key information – and you don't have to go look for it! It acts as a "business robot," automatically searching for critical events defined by you, then taking appropriate action in response.

## WIP Tracking

Shop Control's WIP tracking provides production updates by pulling routing information from open work orders and presenting finished quantities as they progress through operations and work centers. WIP tracking saves each step and allows production managers to review performance at any time.

Change Work Orders

Work Order: 1003 Work Order Date: 03/23/01  
Sales Order #: [ ] Sales Order Date: / /  
Finished Good: WIDGET Required Date: 03/23/01  
Description: Widget - Manufactured Item

Cust No: MFGW0 Status: Exploded Required Qty: 100.000  
Company: [ ] Stock U/M: EA

BOM Number: WIDGET Revision Level: [ ]  
Description: Widget - Manufactured Item  
Finish Loct: WH1 Route: WIDGET  
Description: Warehouse 1 Job: [ ]  
Store: [ ] Bin: [ ]  
Serial Number: [ ] Lot Number: [ ]

On Hand: 6.000 Allocated: 0.000 On Order: 100.000  
Work Order Exploded

Work orders can be created in a wide variety of methods with the real-time allocation of component parts.

## Powerful Drilldown Capabilities

The exclusive ACCPAC DataDriller™ technology delivers sophisticated multilevel drill-down functionality within ACCPAC Pro Series Manufacturing. You can display data in any order and customize it for any user. You assign the permissions and security codes, so you're in control. Plus, once these data views are defined, you can create unlimited custom reports using the DataDriller Report Wizard™. DataDriller can also run as a stand-alone application for faster access to key information for users who don't need to edit the accounting system.

## Project Accounting

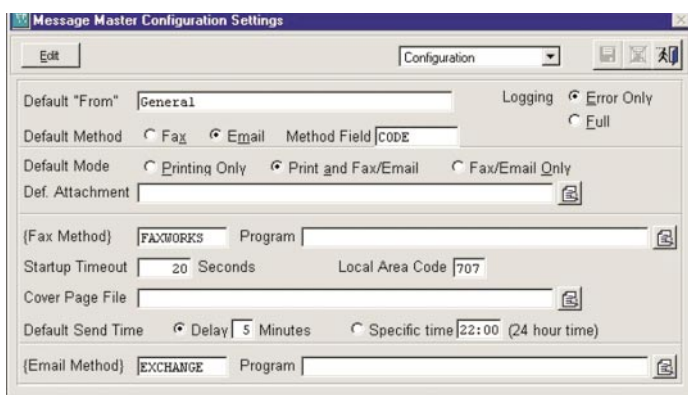
Project Accounting provides a fast, flexible budgeting and cost accounting tool for project and job cost management. It lets you test, analyze and adjust budgets before final decisions are made. The program provides detailed reports of all job-related costs so you can monitor a job's progress and budget for future projects.

## Unlimited Customization

With Customization Manager, it's never been easier to create unique screens and reports; you can even customize style sheets for specific customers. Included with Pro Series Manufacturing Enterprise Edition and optional with Pro Series Manufacturing Small Business Edition, Customization Manager enables you to tailor the look-and-feel of your system. And when you need full access to source code in order to modify your system to meet your unique business needs, look to Pro Series Manufacturing Enterprise Edition for ultimate flexibility and growth.

## Advanced Messaging

Message Master™ lets you generate faxes or e-mails from any ACCPAC report, including graphical forms. You can send forms or reports concurrently to a virtually unlimited number of recipients at any time of day, with the ability to customize settings by user and to keep a log of all documents transmitted. Imagine sending all your invoices in seconds!



With Message Master you can fax, print or send any report or form via e-mail from your accounting system.

## Ultimate End-User Efficiency and Productivity

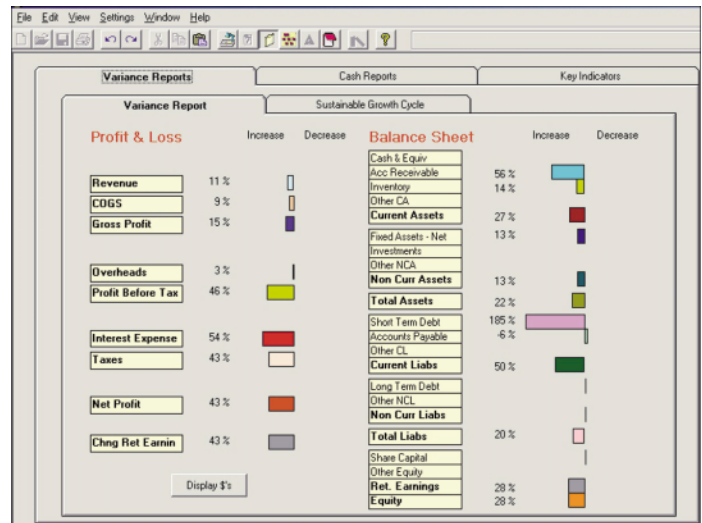
ACCPAC Pro Series Manufacturing offers great flexibility with toolbars that are customizable by user and available throughout the system. Now your employees can have instant access to the transaction and maintenance screens they use most – which translates into increased efficiency and productivity.

## Integrated Warehouse Management

ACCPAC Warehouse Management System™ (WMS) seamlessly integrates with Pro Series Manufacturing and scales to accommodate the varied demands of small to highly complex, high-volume distribution centers. ACCPAC WMS™ works with ACCPAC Pro Series Manufacturing by integrating radio-frequency and barcoding technologies, shipping systems and other warehouse automation equipment with the Order Entry, Inventory Control and Purchase Orders modules. ACCPAC WMS Lite is included free of charge with Pro Series Manufacturing Enterprise Edition Inventory Control.

## In-Depth Financial Analysis

ACCPAC CFO™ is a financial diagnostic and strategic analysis tool that begins where General Ledger and traditional financial reports end. This interactive solution provides you with a unique approach to interpreting your financial data – delivering a one-page financial scorecard that highlights key business indicators. With CFO, you can instantly create budgets and forecasts, and perform sophisticated “what-if” analysis. ACCPAC CFO Lite is included free of charge with Pro Series Manufacturing Enterprise Edition General Ledger.



With ACCPAC CFO you can perform sophisticated “what-if” analysis, and instantly create budgets and forecasts.



# A Full Suite of Financial Modules

## System Manager

System Manager is the control center for ACCPAC Pro Series Manufacturing. With System Manager you can configure system and workstation settings, user security and more. Its data dictionary provides utilities for viewing and maintaining database files, and lets you modify and create your own custom databases.

## General Ledger

General Ledger gives you advanced general ledger and financial reporting capabilities designed to meet the needs of today's businesses. Entries can be posted to current, previous and future periods, and periods can be locked from posting. Flexible report formats provide comprehensive financial, comparative and audit trail options.

## Accounts Receivable

Accounts Receivable is a billing and accounts receivable system, with extensive sales analysis reports. Accounts Receivable instantly displays and prints 24-month customer sales and 36-month item sales histories and graphs, and updates customer and inventory records in real time, consistently providing you with the most current information.

## Accounts Payable

Accounts Payable creates checks and tracks credits, discounts, partial payments and recurring obligations, and generates warning notices to help prevent losses – allowing you to effectively manage your business expenses. Accounts Payable includes numerous vendor and payable inquiries and an extensive library of expense analysis reports.

## Payroll

Payroll enables you to calculate and maintain payroll and labor distribution for hourly, salaried, commissioned and per-unit employees in an easy-to-use graphical Windows environment. Payroll includes direct deposit capabilities, and tax calculations for all 50 states, the District of Columbia and Puerto Rico.

## Customization Manager

*Optional in Pro Series Manufacturing Small Business Edition*

Customization Manager enables you to modify the look and feel of your ACCPAC Pro Series Manufacturing screens and preserve your changes in future builds. This powerful tool is designed to allow you to make cosmetic changes to your ACCPAC Pro Series Manufacturing screens without requiring access to source code.

## Report Writer

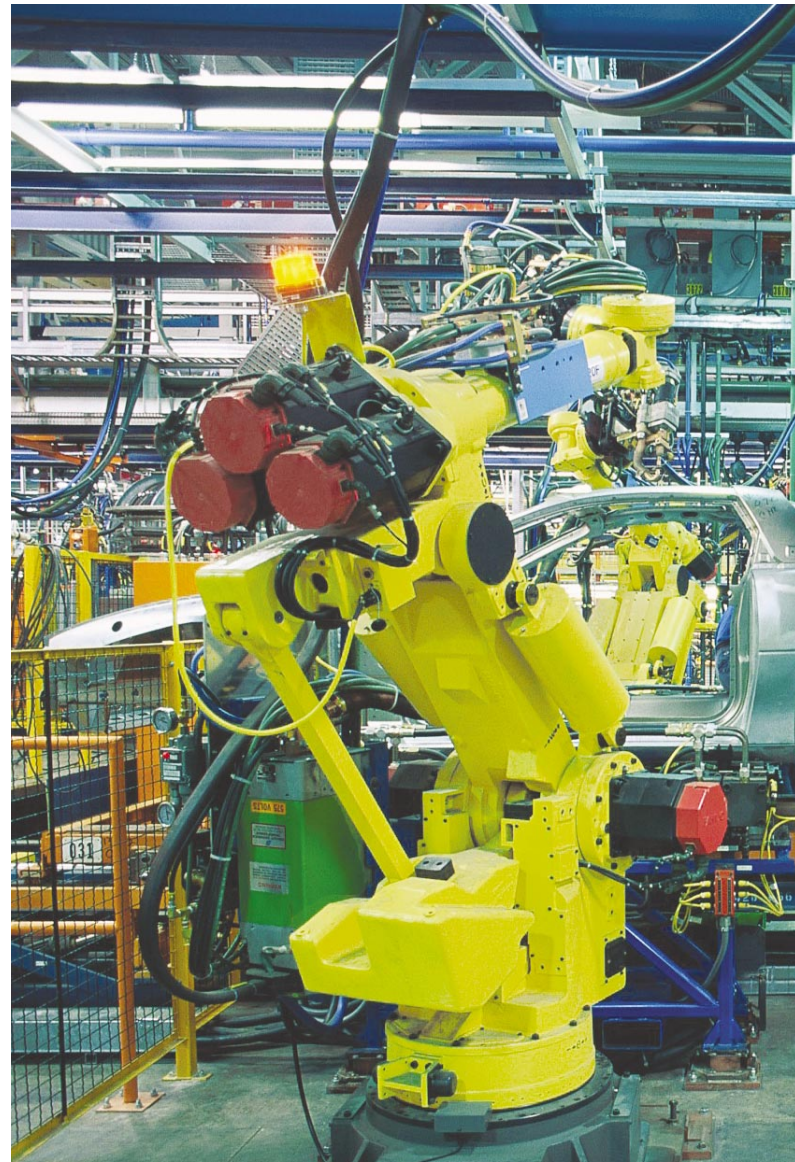
*Optional in Pro Series Manufacturing Small Business Edition*

Unlock the data in your ACCPAC Pro Series Manufacturing accounting system using this award-winning report writer. This powerful and flexible module creates custom queries and reports with your ACCPAC Pro Series Manufacturing data quickly and easily, without programming.

## Multicurrency

*For Pro Series Manufacturing Enterprise Edition only*

Multicurrency provides the means for maintaining various global currencies and exchange rates in your accounting system. Transactions throughout the system are translated from currencies and exchange rates you define. Multicurrency tracks foreign currency trading partners and handles all the transactions and reporting for you. Multicurrency requires General Ledger and Accounts Payable to be installed.



**Pro Series Manufacturing offers a full range of features and benefits to help you better manage your business.**

# ACCPAC®

ACCPAC International, Inc.  
6700 Koll Center Parkway  
Third Floor  
Pleasanton, CA 94566  
925-461-2625  
800-873-7282  
Corporate: [www.accpac.com](http://www.accpac.com)  
Hosted Services: [www.accpaconline.com](http://www.accpaconline.com)



Windows® 2000 Ready



**ACCPAC**  
*online*

Program prices, specifications, system recommendations and program requirements are subject to change without notice. Information contained in this document supersedes any previously published information about these products.

Copyright © 2002 ACCPAC International, Inc. All rights reserved. ACCPAC, the ACCPAC logo, ACCPAC Online, the ACCPAC Online logo and the ACCPAC product names mentioned herein are registered trademarks or trademarks of ACCPAC International, Inc. or its affiliates in the United States and/or other countries. All other marks are registered trademarks or trademarks of their respective companies.

PSMF001U0802